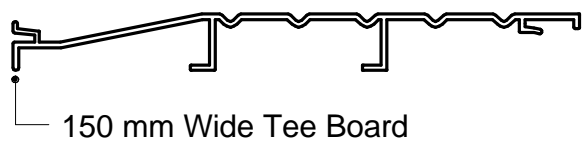
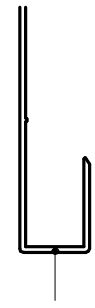




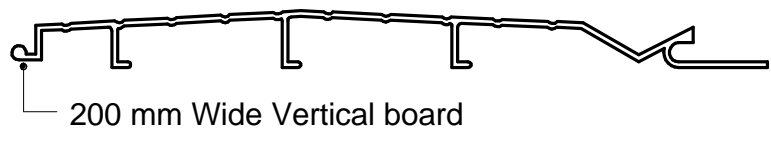
190 mm Wide Standard Weatherboard



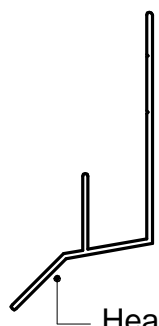
150 mm Wide Tee Board



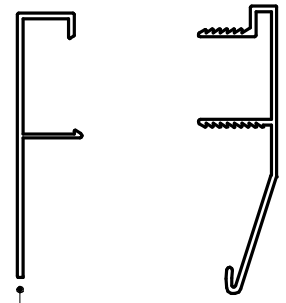
Vertical Board Starter Strip



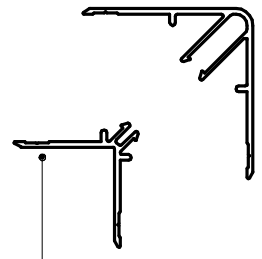
200 mm Wide Vertical board



Head Flashing



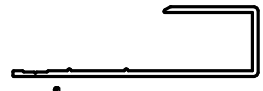
Soffit Clip



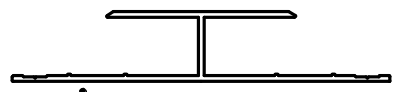
Corner Flashing



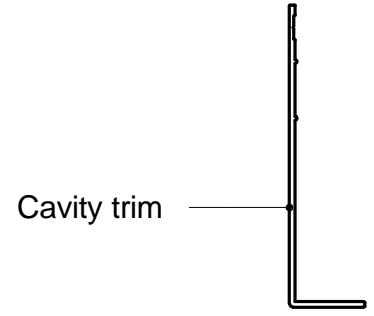
Starter Strip



Jamb Flashing



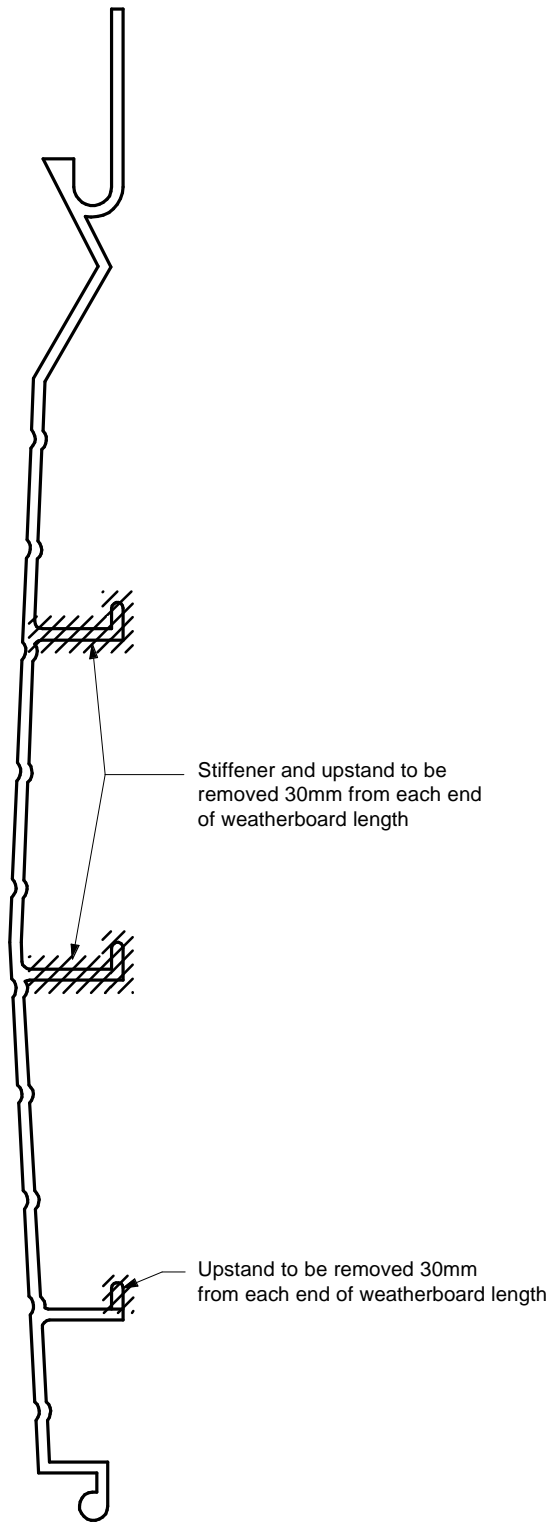
Vertical Jointer



Cavity trim

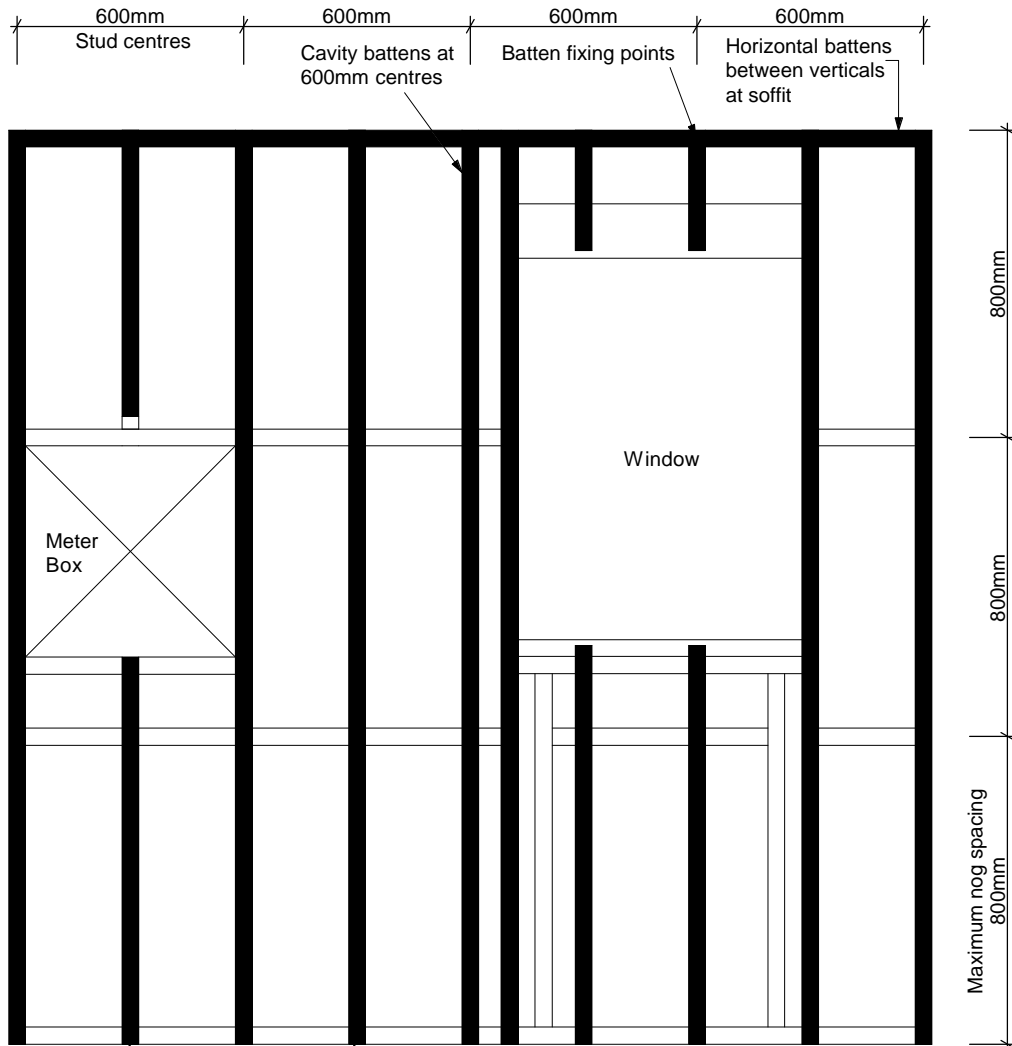


Locator Clip



Vertical Board Installation Requirements

Ulltraclad® Cavity System
Ullrich Aluminium Co. Ltd.
Detail No: 2
Date: December 2006



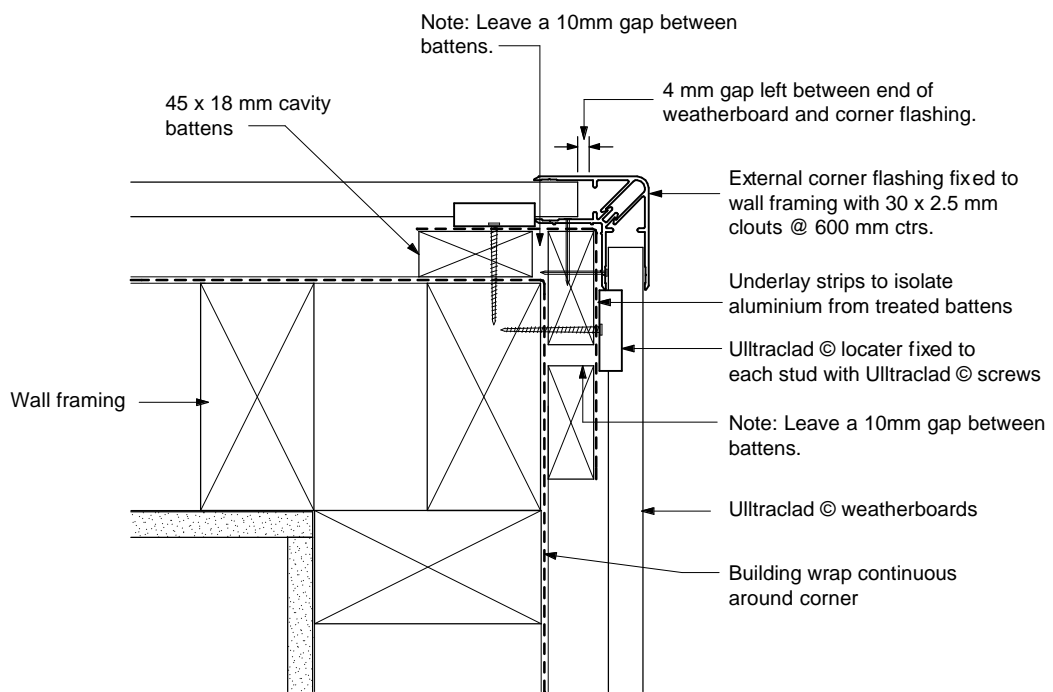
Studs can be 45mm or 35mm wide

The intermediate support for insulation between the studs can be a cavity batten, polypropylene tape or 75mm galvanised wire mesh.

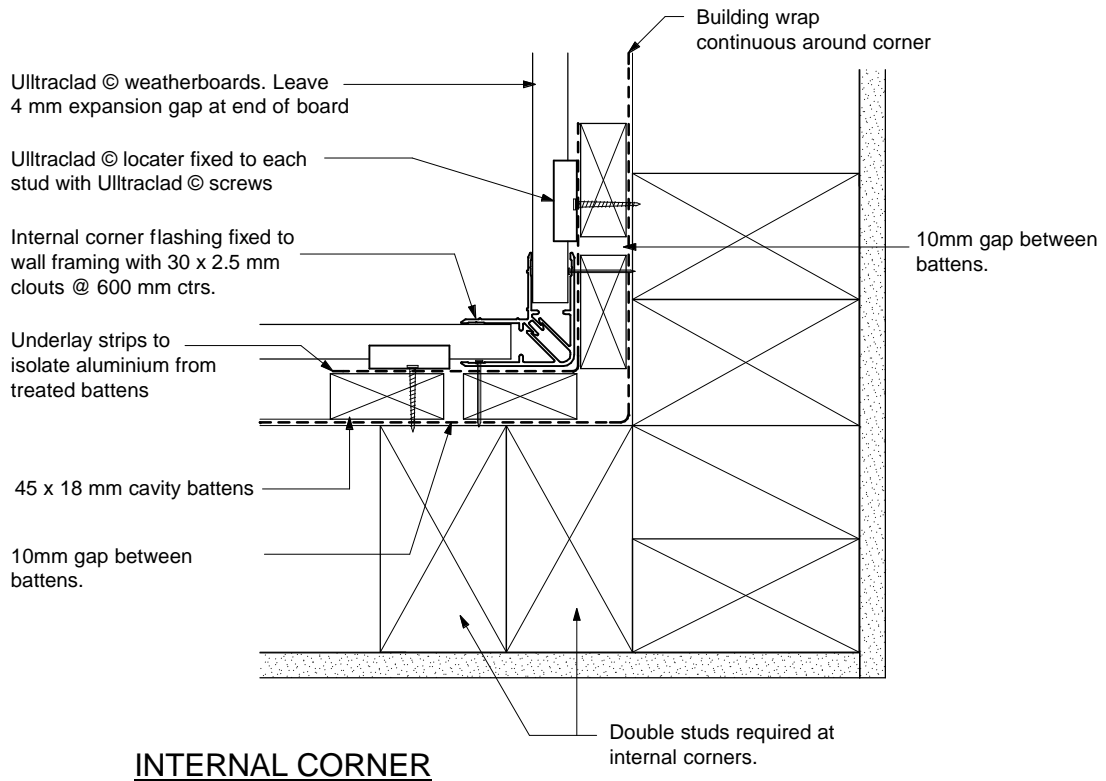
CAVITY BATTEN LAYOUT AT WINDOW OPENING

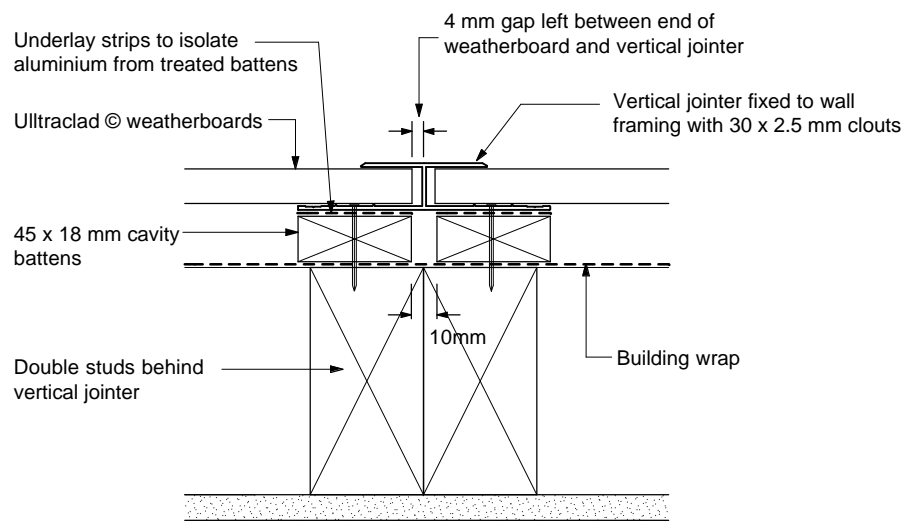
Note : 100mm long horizontal packers to be installed mid-dwang if intermediate vertical battens not used. Packers must be set to fall 5° fall.

Ulltraclad® Cavity System
 Ullrich Aluminium Co. Ltd.
 Detail No: 3
 Date: December 2006

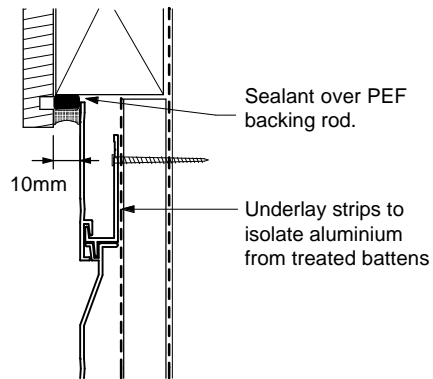


EXTERNAL CORNER

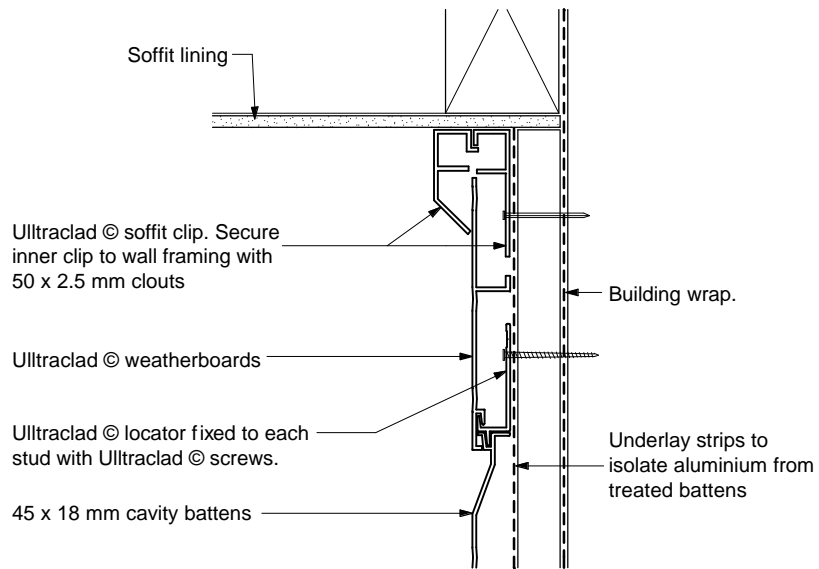




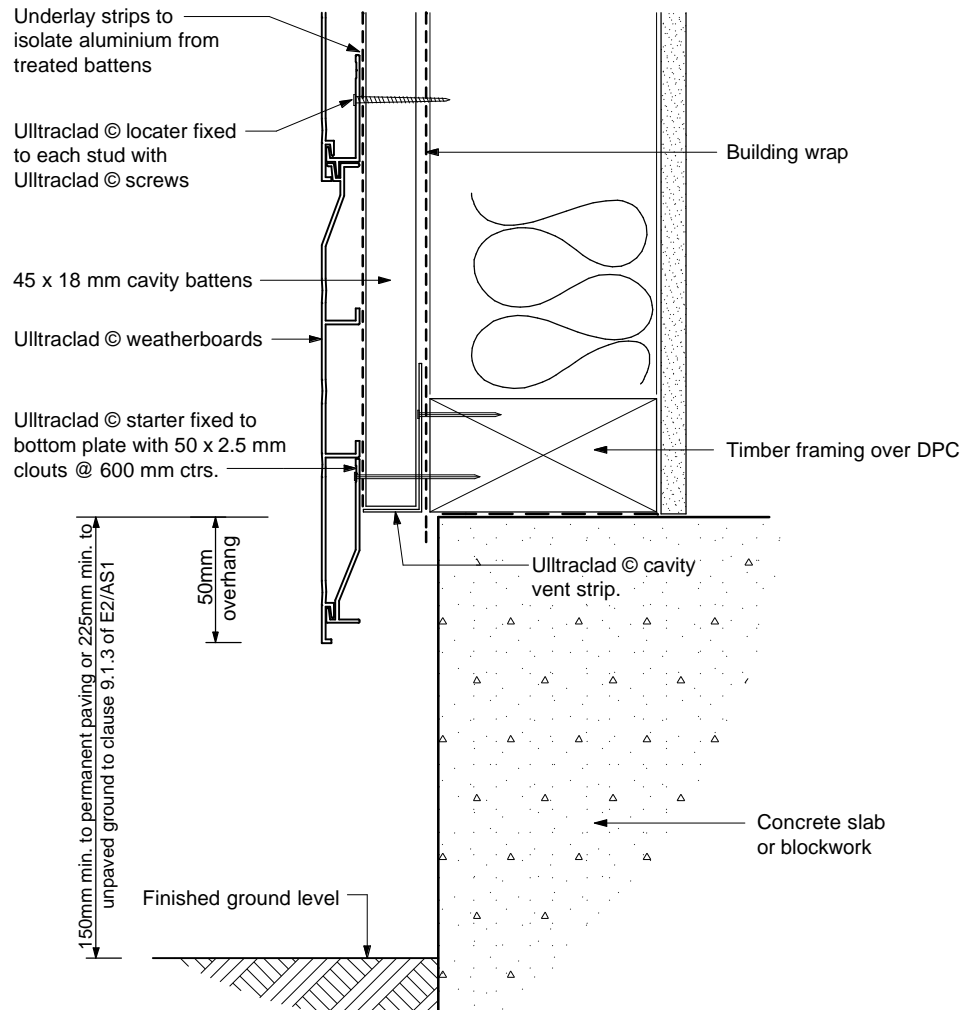
VERTICAL WALL JOINTER



SOFFIT DETAIL WITHOUT EAVES

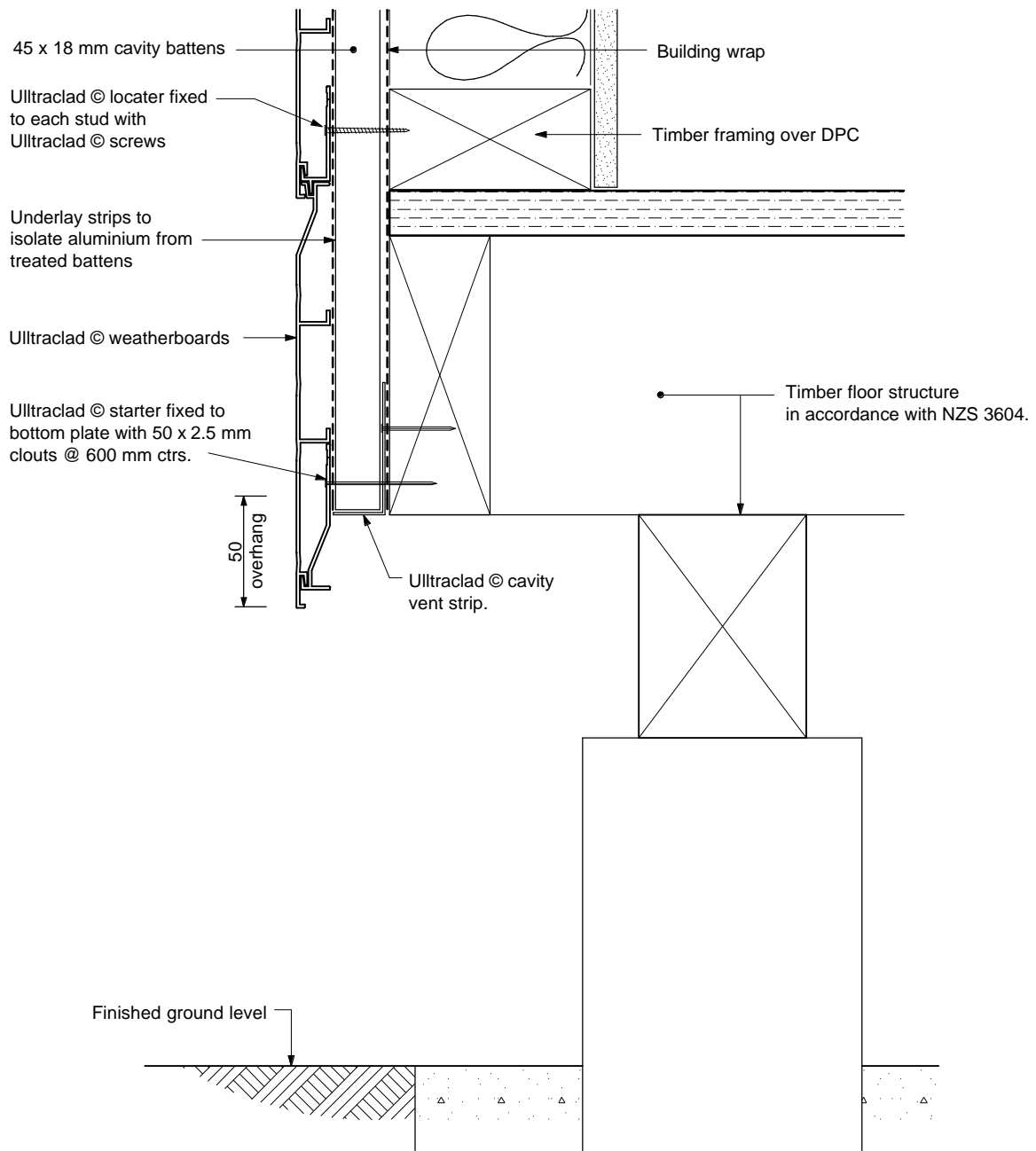


SOFFIT DETAIL



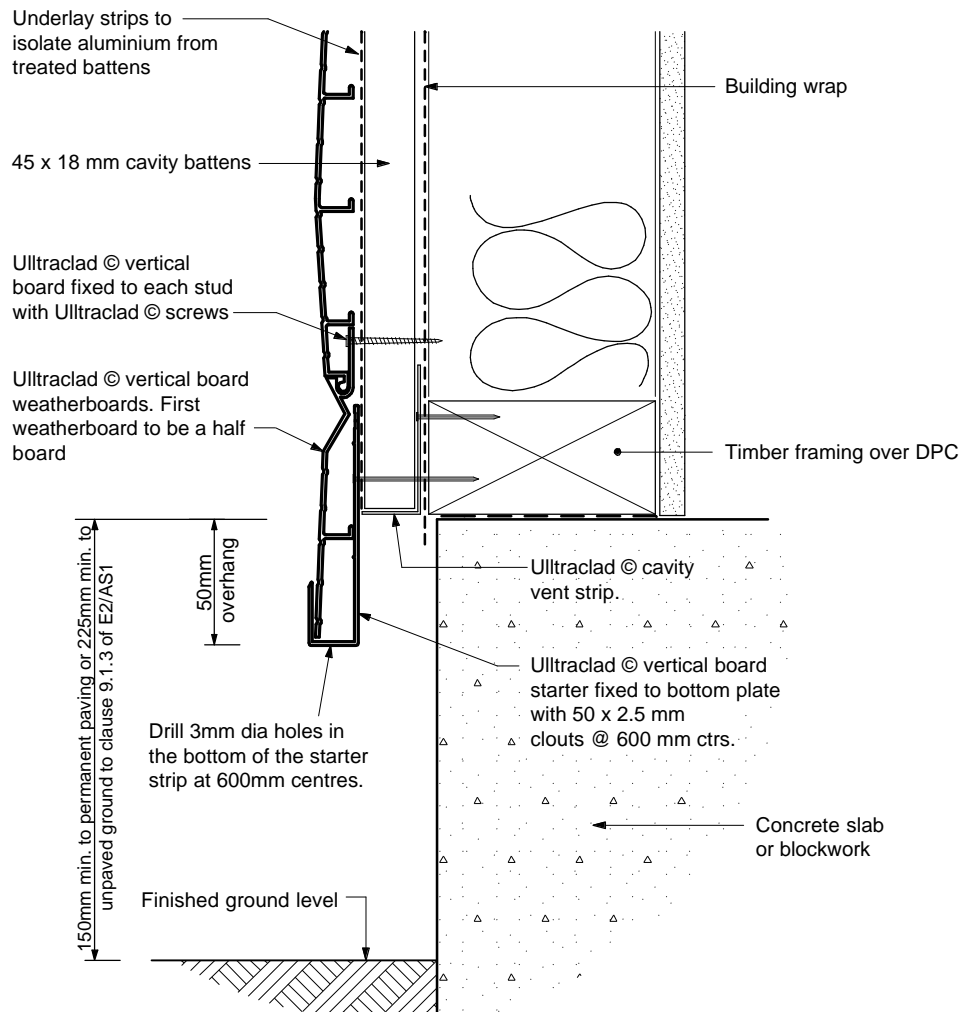
WALL STARTER

Ulltraclad® Cavity System
 Ullrich Aluminium Co. Ltd.
 Detail No: 8
 Date: December 2006

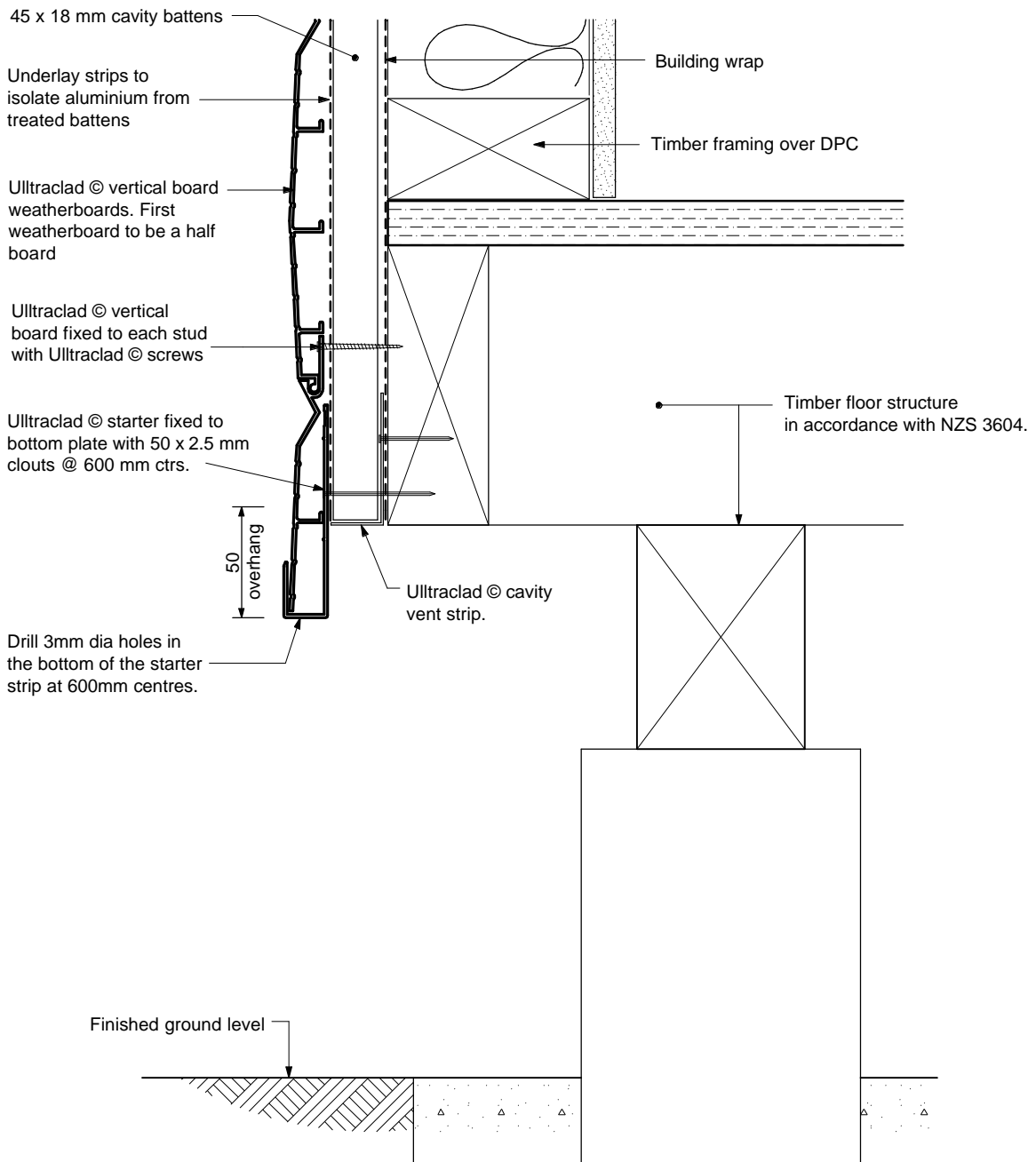


WALL STARTER TIMBER FLOOR

Ulltraclad[®] Cavity System
 Ullrich Aluminium Co. Ltd.
 Detail No: 9
 Date: December 2006

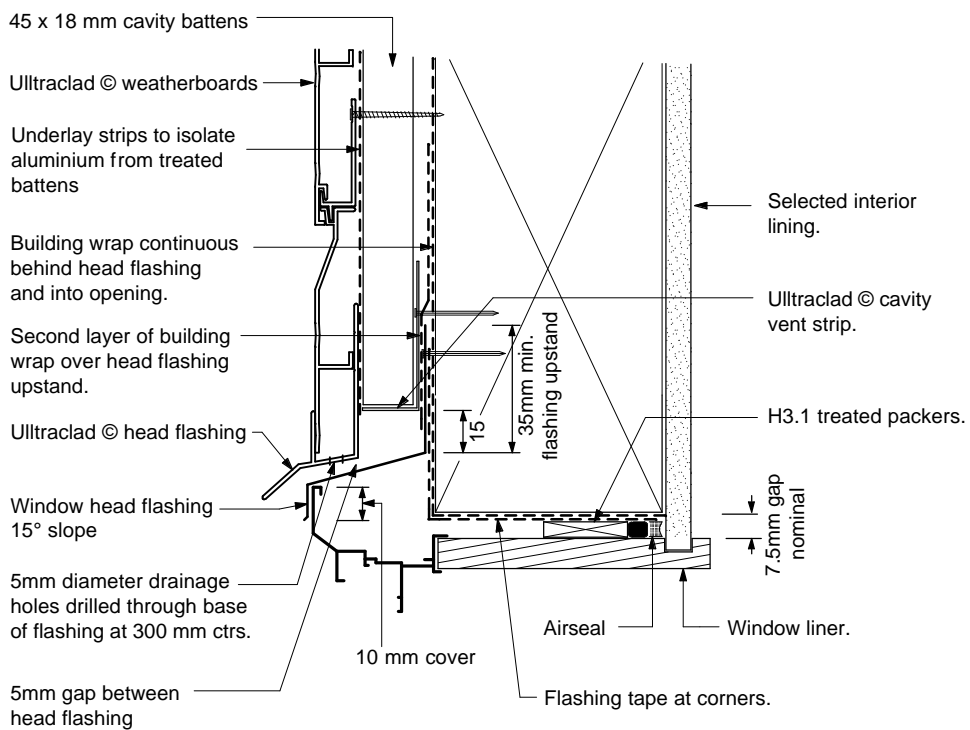


WALL STARTER



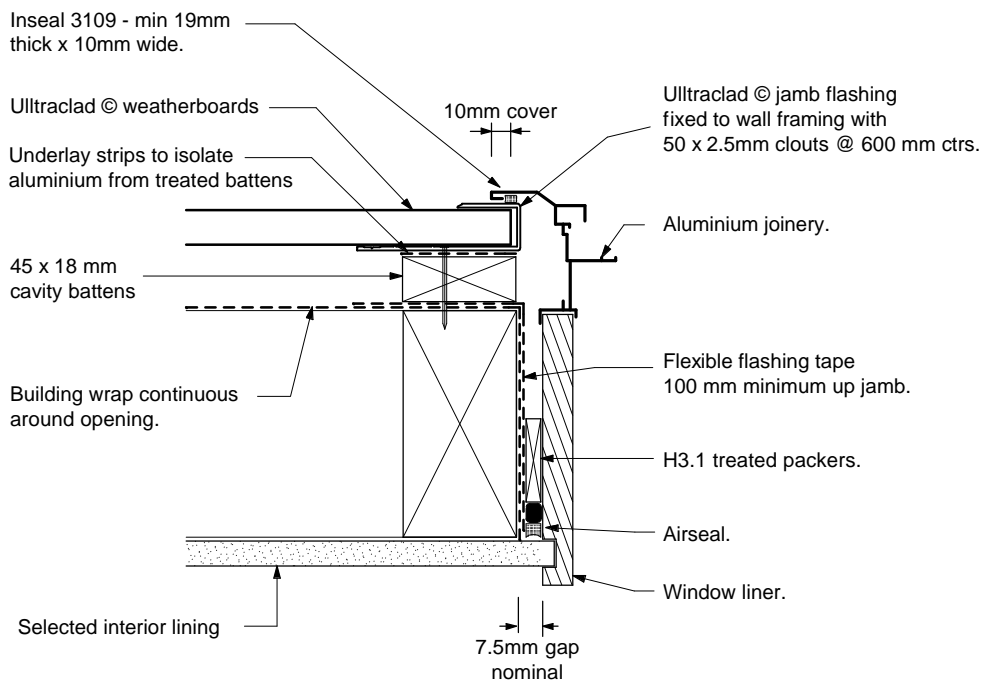
WALL STARTER TIMBER FLOOR

Ulltraclad® Cavity System
 Ullrich Aluminium Co. Ltd.
 Detail No: 11
 Date: December 2006

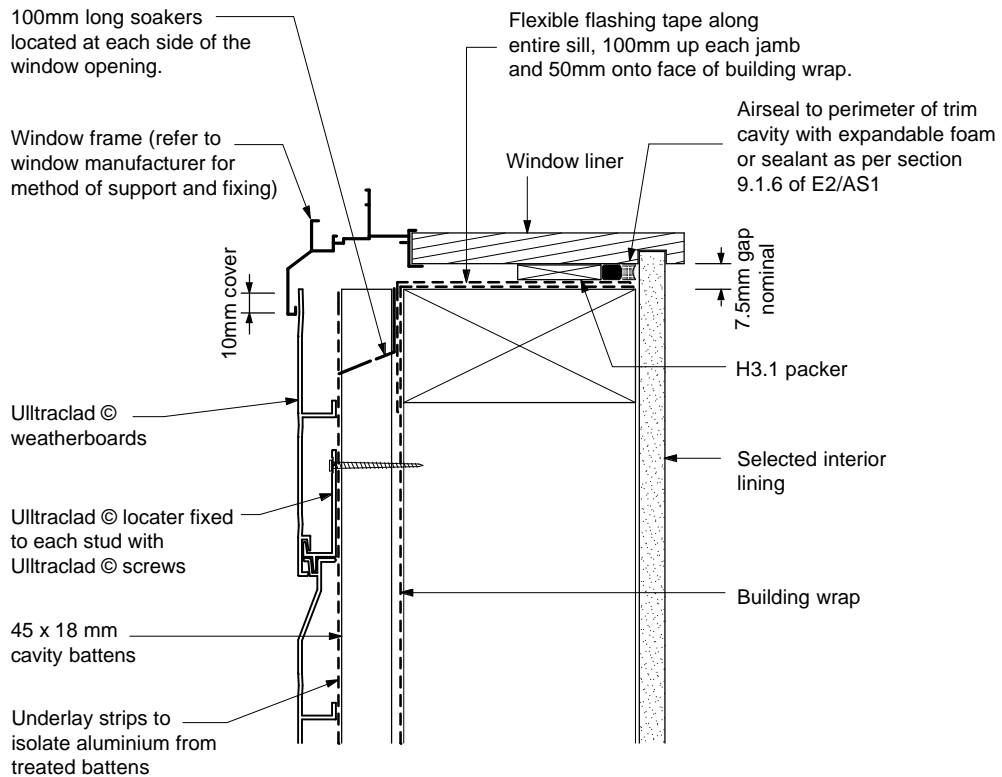


WINDOW HEAD

Ulltraclad® Cavity System
 Ullrich Aluminium Co. Ltd.
 Detail No: 12
 Date: December 2006

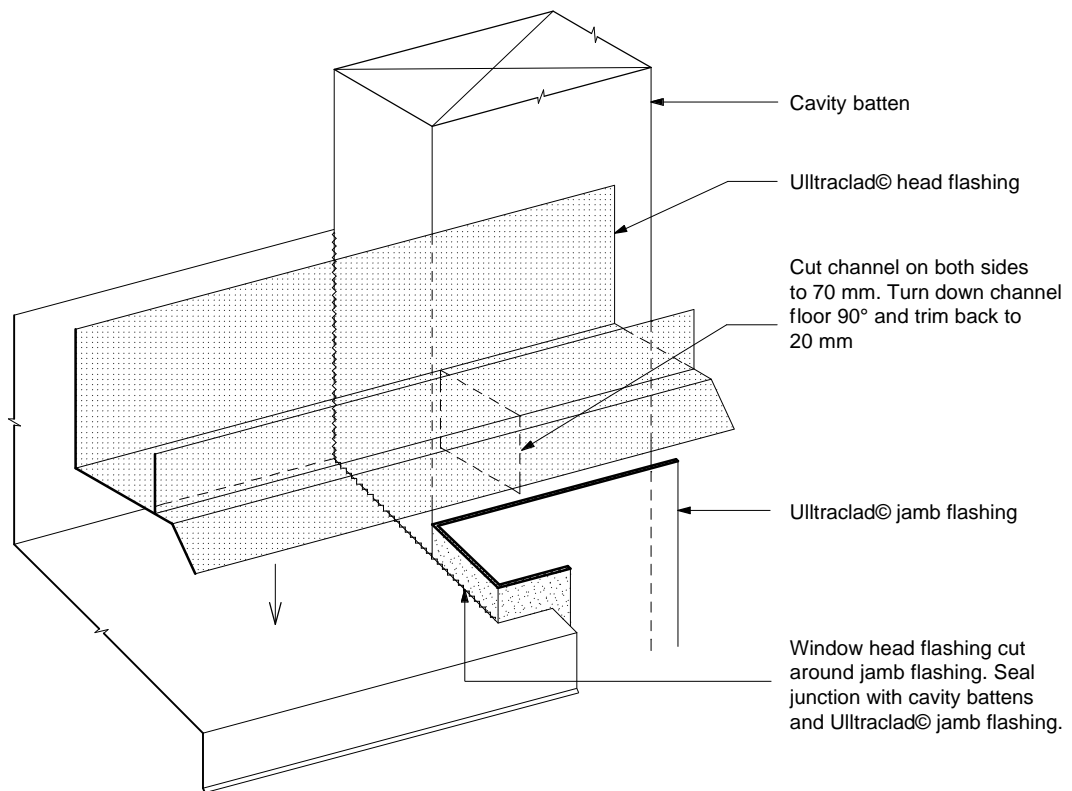


WINDOW JAMB



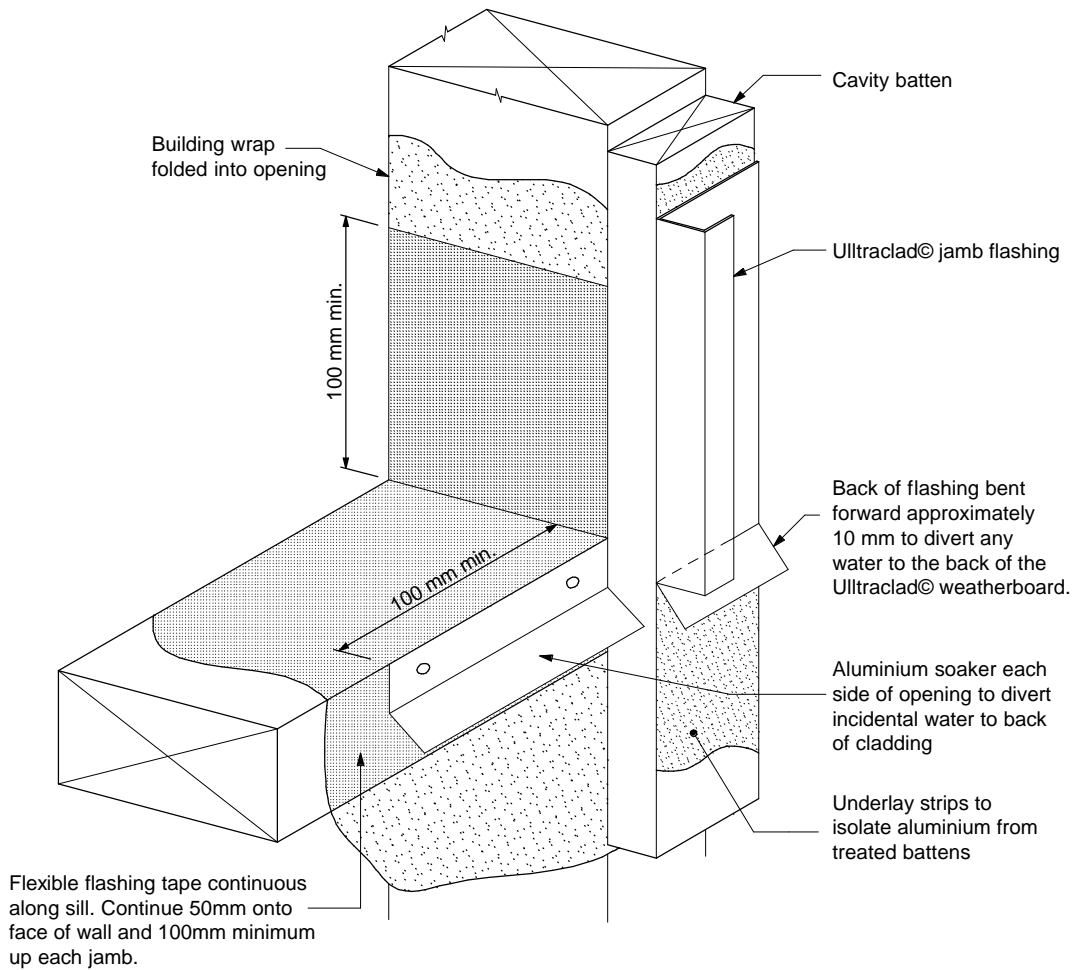
WINDOW SILL

Note: A sloped sill trimmer is required when the glazing pocket of the window / door frame is positioned back past the line of the wall framing.

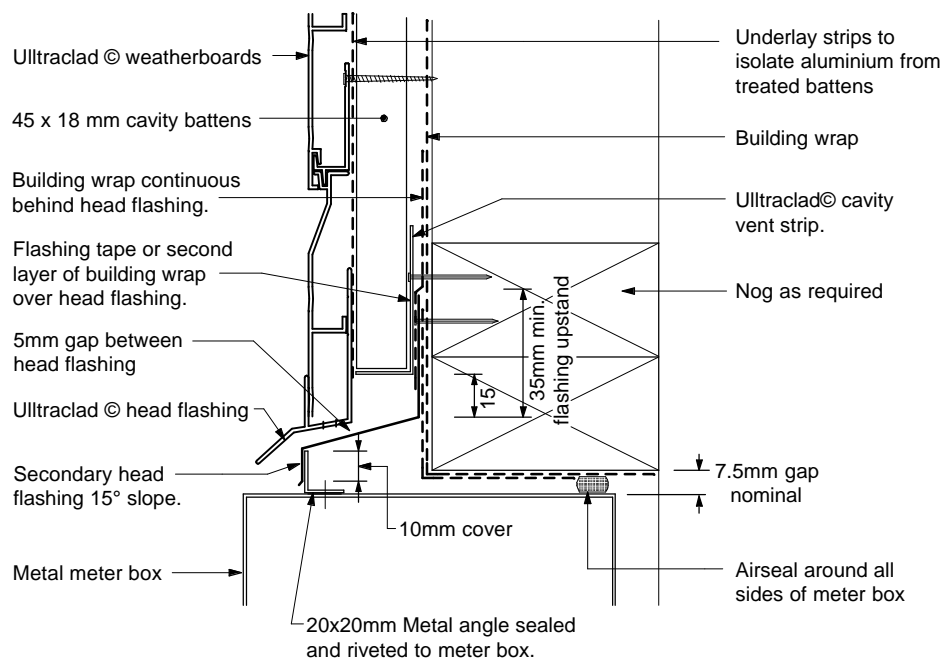


HEAD / JAMB ISOMETRIC

Note: Ulltraclad® Head flashing to extend 80 mm past edge of window or door joinery
 Building wrap and flashing tape omitted for clarity.

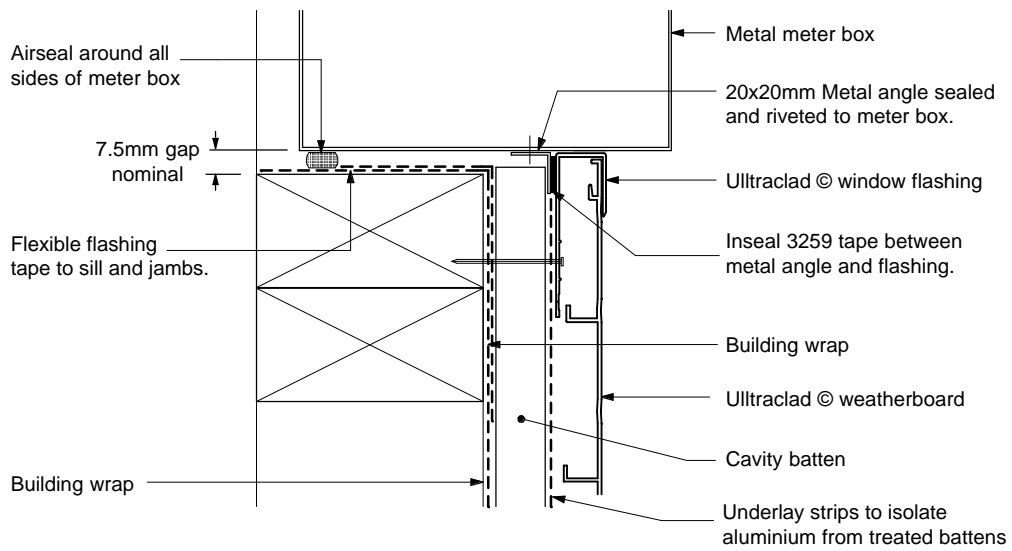


SILL / JAMB ISOMETRIC

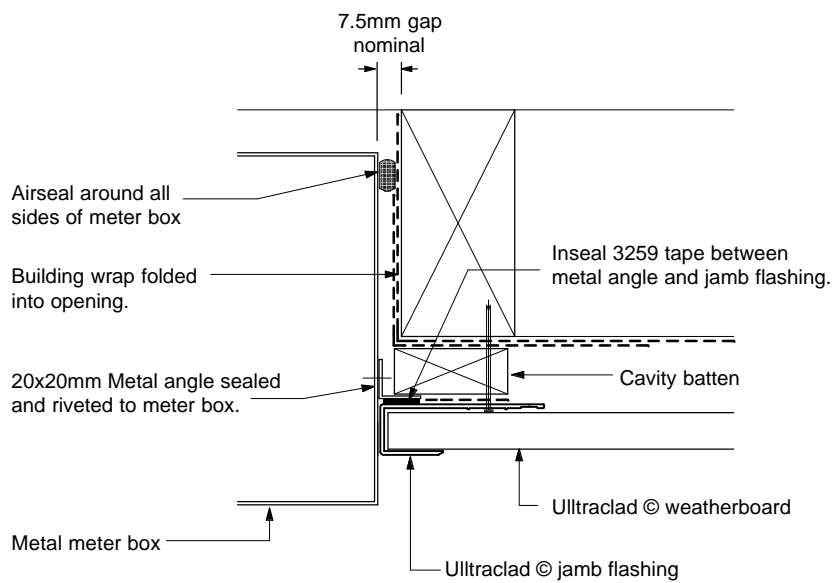


METER BOX HEAD DETAIL

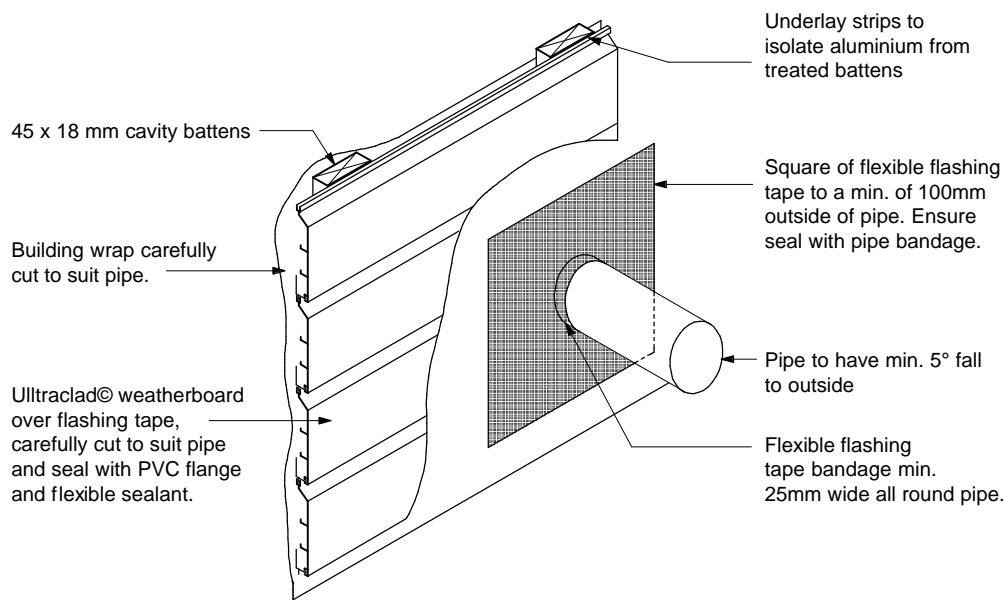
Ulltraclad® Cavity System
 Ullrich Aluminium Co. Ltd.
 Detail No: 17
 Date: December 2006



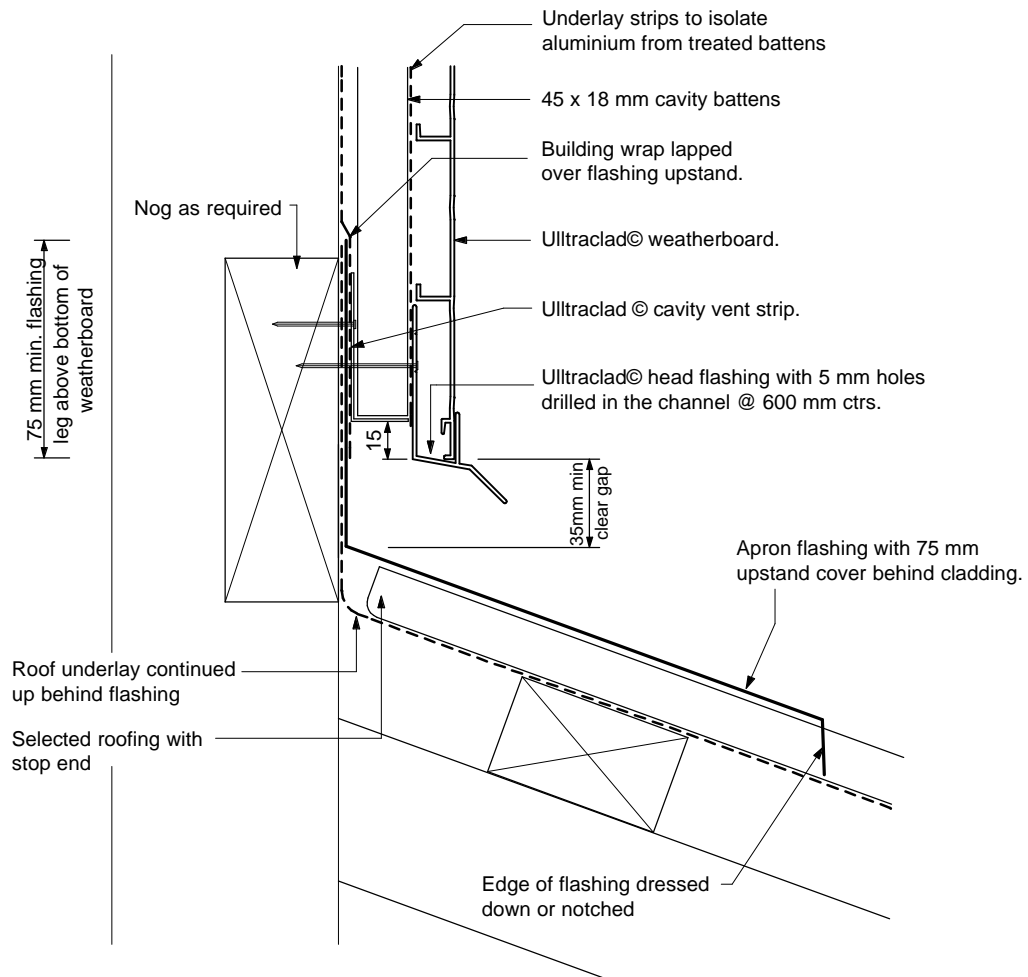
METER BOX SILL DETAIL



METER BOX JAMB DETAIL



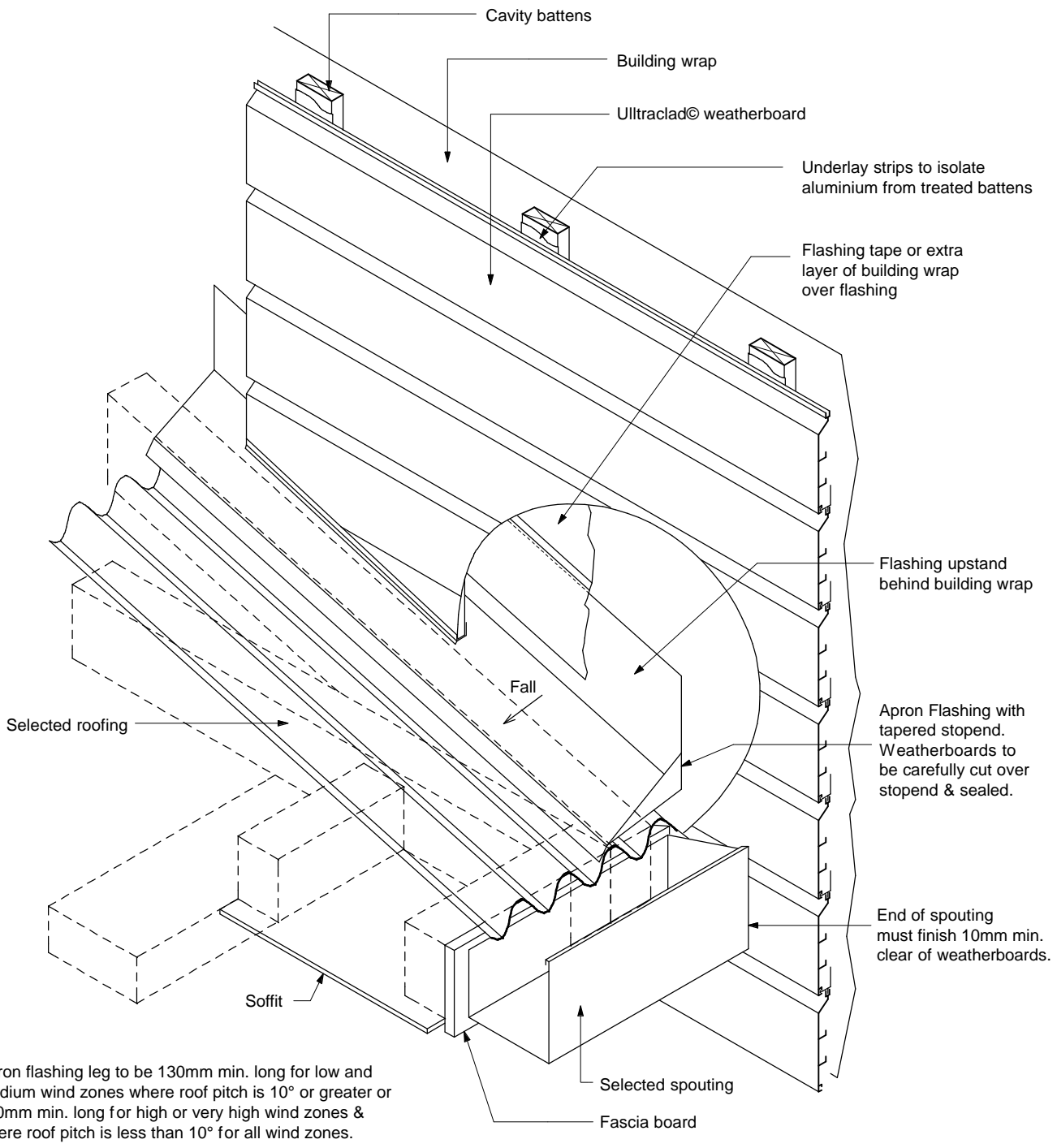
PIPE PENETRATION



NOTE

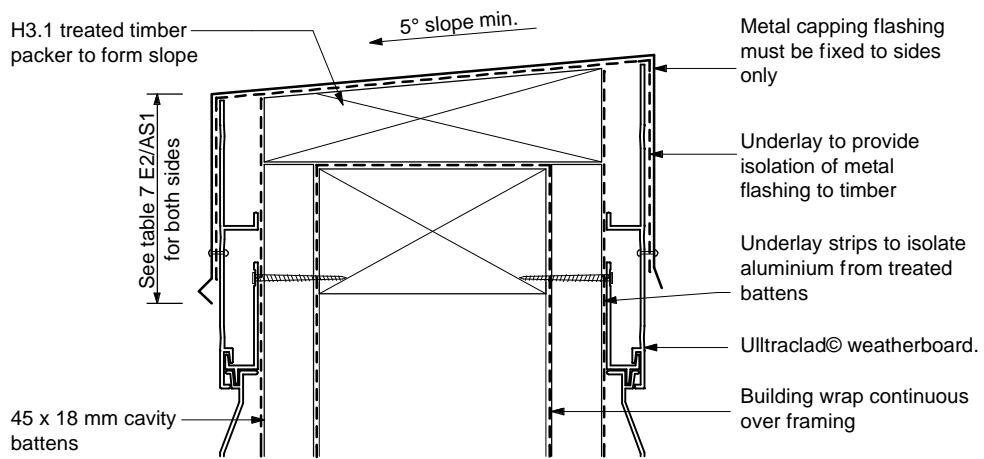
Apron flashing leg to be 130mm min. long for low or medium wind zones where roof pitch is 10° or greater or 200mm min. long for high or very high wind zones and where roof pitch is less than 10° for all wind zones.

ROOF / WALL JUNCTION

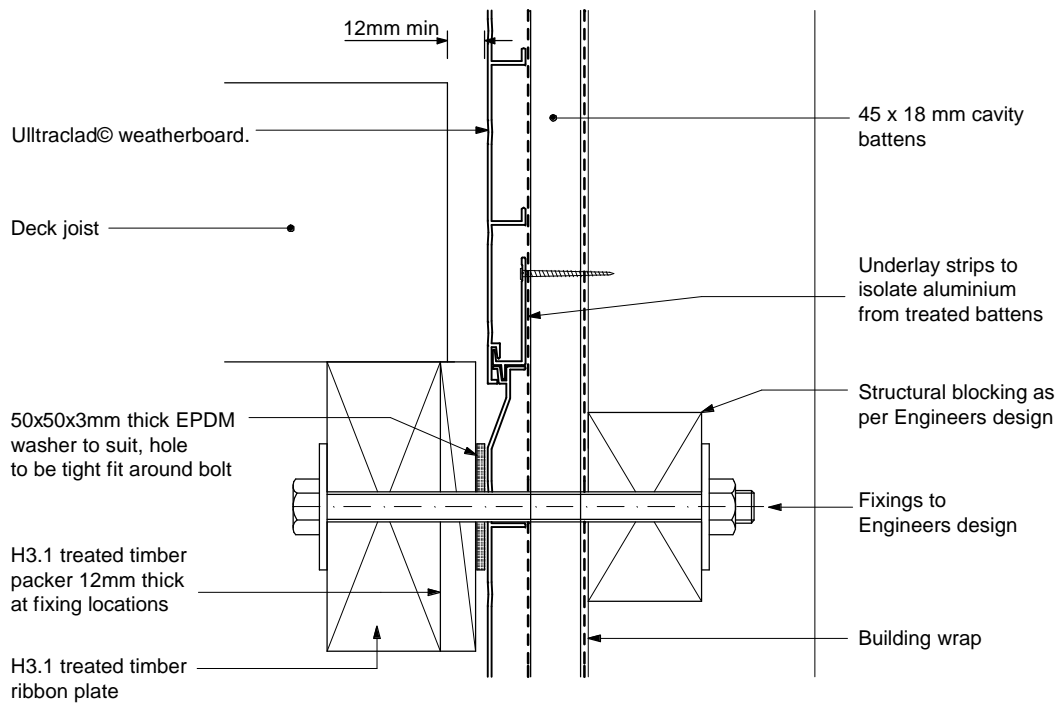


GUTTER / WALL JUNCTION

Ulltraclad® Cavity System
 Ullrich Aluminium Co. Ltd.
 Detail No: 21
 Date: December 2006

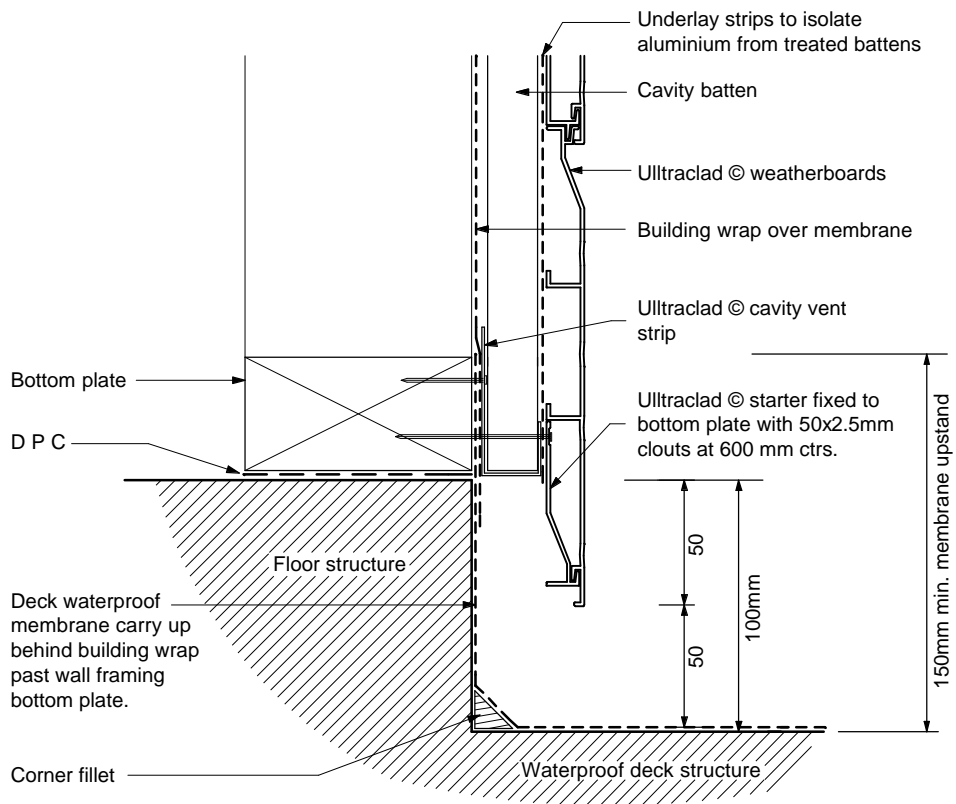


PARAPET FLASHING



DECK JUNCTION

Ulltraclad® Cavity System
 Ullrich Aluminium Co. Ltd.
 Detail No: 23
 Date: December 2006



CAVITY AT WATERPROOF DECK

Ultraclad® Cavity System
 Ullrich Aluminium Co. Ltd.
 Detail No: 23
 Date: December 2006

